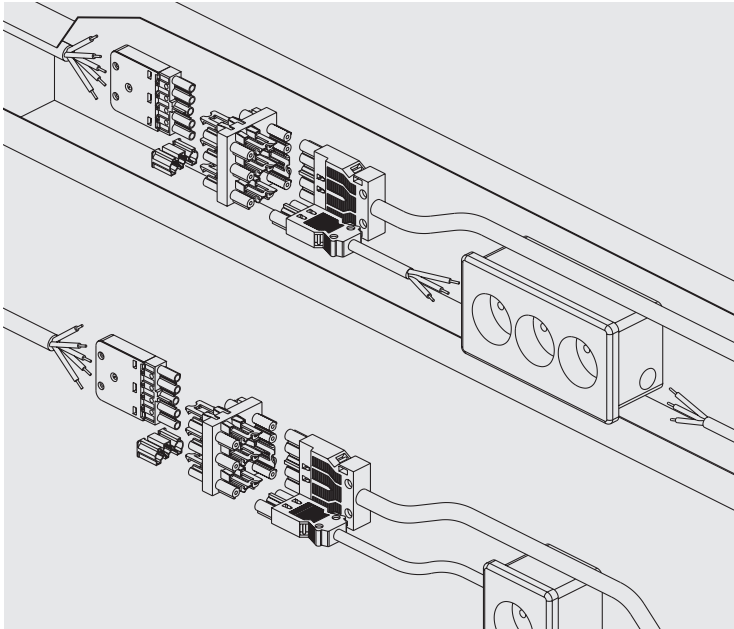




GST 18i5

5 pole mains

Application example



General

Apart from the standard coding for network applications, an additional variant is available here which is specially reserved for dimming applications (1-10 V, DALI). Mechanical coding means that only associated pairs of male and female connectors can be connected with the correct polarity. You therefore have the security of a clear segregation of different applications without having to redo any incorrect connections. The colour of the connectors indicates the relevant links. If only one code differentiation is sufficient or required, you can choose between two colours within Code 1. These connectors are then mutually compatible.

Coding

					Application		Mains with earth		Mains with earth, Dimming 2 pole			
					Mechanical coding		Code 1		Code 2			
Name	Description	Connection style	Strain relief housing	Conn. points per pole	black	white	pastel blue					
Connector	Standard	screw	no	1								
			yes	1								
	Flat design		yes	1								
Snap in	For material thickness: 0.5 - 1.5 mm	Spring		2								
Solder connection	Vertical	Solder pins		1					upon request			
	90°								upon request			
Junction	1 input, 1 output 5 pole	preassembled	preassembled	preassembled								
	6 outputs 3 pole											
	1 input, 3 outputs 5 pole											
	1 input, 2 outputs 5 pole, T-shaped											
	1 input 1 output 5 pole 1 output 3 pole, T-shaped											
Junction box with optional components												
Prefabricated cables	Male conn. – free end											
	Female conn. – free end											
	Male conn. – Fem. conn.											

GST 18i 5 pole 250/400 V, 16 A

			Screw connection		Screw connection		Snap-in, Spring-loaded	
			<p>without strain relief for 0.5 – 2.5 mm², cables, single-core and finely stranded, lockable**, screws into housing*)</p>		<p>For cross sections of 1.5 – 2.5 mm², single-core and finely stranded, one connection per pole unassembled with, strain relief, for H05VV, NYM¹⁾ (Ø 8 – 12.5 mm), lockable**</p> <p>Pastel blue for dimming applications with 0–10 V control signal, strain relief cable combination NYM 3x1.5 mm² and IYSTY 2x2x0.8 is possible</p> <p>*Insulation strip length: 8 mm Sheath strip length: 46 mm</p>		<p>material thickness: 0.5 – 1.5 mm Panel mounting²⁾, 2 screwless connections per pole rigid cable 0.5 – 2.5 mm², finely stranded cable 0.5 – 1.5 mm² with ferrule³⁾ with locking device</p> <p>Pastel blue for dimming applications with 0–10 V control signal</p> <p>Insulation strip length 0.5 – 1.5 mm²: 8 mm Insulation strip length 2.5 mm²: 9 mm</p>	
Application	Coding	Colour	Part No.	Box Qty	Part No.	Box Qty	Part No.	Box Qty
Female connector								
Mains with earth	Code 1 	black (on request) white	92.051.3253.1	100	92.953.3053.1	50	92.051.9658.1	100
Dimming	Code 2 	pastel blue			92.953.3453.0	50	92.051.8658.0	100
Type			GST 18i5S B1		GST 18i5S B1 Z		GST 18i5F B2 R	
Application	Coding	Colour	Part No.	Box Qty	Part No.	Box Qty	Part No.	Box Qty
Male connector								
Mains with earth	Code 1 	black (on request) white	92.052.3353.1	100	92.954.3053.1	50	92.052.9658.1	100
Dimming	Code 2 	pastel blue			92.954.3453.0	50	92.052.8658.0	100
Type			GST 18i5S S1		GST 18i5S S1 Z		GST 18i5F S2 R	
							²⁾ Panel material deburring and coating thickness may influence the cut-out dimension. Detailed installation instructions are available on request. ³⁾ See "Accessories" for ferrules and crimping tools	
					¹⁾ Other cables and cross sections available on request			

Soldered connection, vertical

Soldered connection, right horizontal

Can be soldered onto a printed circuit board

- **vertical**
- with locating cams
- optional locking device

Can be soldered onto a printed circuit board

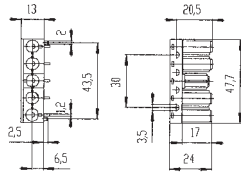
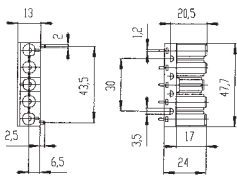
- **horizontal**
- with locating cams
- optional locking device

See "Technical Data" for hole template for GST 18 soldered connector.

See "Technical Data" for hole template for GST 18 soldered connector.

Part No. Box Qty

Part No. Box Qty



92.051.0058.1 100

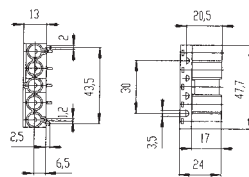
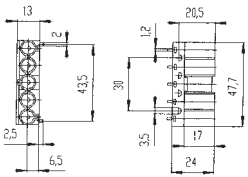
92.053.0058.1 100

GST 18i5L B1 V

GST 18i5L B1 H

Part No. Box Qty

Part No. Box Qty



92.052.0058.1 100

92.054.0058.1 100

GST 18i5L S1 V

GST 18i5L S1 H

- *) 1. When striking voltage occurs in a range between 3 and 5 kV, screws made out of insulating material should be used for mounting the connector to prevent flashover.
2. Exposed conductive material that is used for mounting must be earthed.
3. When attaching to predrilled steel plates, connectors self-tapping screws with a maximum diameter of ≤ 3 mm may be used.
4. The distance between the fixing holes may not exceed a tolerance of ± 0.1 mm.
5. To avoid damaging the insulating material, self tapping screws may not be screwed into the fixing holes of the connector.
6. Only plastic screws may be used for the fixing hole between the outer pole 2 and pole N.

***) VDE 0628 requires the use of a locking device.

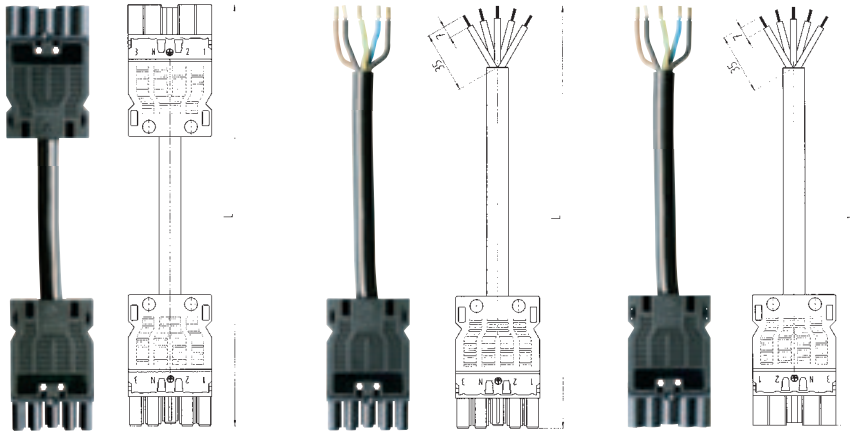
GST 18i 5 pole 250/400 V, 16 A

			Extender lead		Starter lead		Connection lead			
Cable: H05VV-F5G1.5/2.5 Insulation: with halogen (PVC)					5 x 1.5 mm² female – male		5 x 1.5 mm² female – free end with ferrules ²⁾		5 x 1.5 mm² male – free end with ferrules ²⁾	
Cable assemblies			Standard PVC cable Type H05VV-F5G1.5							
Application	Coding	Colour	Length ¹⁾	Part No.	Box Qty	Part No.	Box Qty	Part No.	Box Qty	
Mains with earth	Code 1 	black (white with final digit xx.xxx.xxxx.2) cable: black/white	1.0 m	92.257.1000.1	30	92.257.1003.1	30	92.257.1004.1	30	
			2.0 m	92.257.2000.1	20	92.257.2003.1	20	92.257.2004.1	20	
			3.0 m	92.257.3000.1	15	92.257.3003.1	15	92.257.3004.1	15	
			4.0 m	92.257.4000.1	10	92.257.4003.1	10	92.257.4004.1	10	
			5.0 m	92.257.5000.1	10	92.257.5003.1	10	92.257.5004.1	10	
			6.0 m	92.257.6000.1	8	92.257.6003.1	8	92.257.6004.1	8	
			7.0 m	92.257.7000.1	5	92.257.7003.1	5	92.257.7004.1	5	
			8.0 m	92.257.8000.1	5	92.257.8003.1	5	92.257.8004.1	5	
Dimming L, N, PE, +, -	Code 2 	pastel blue cable: black	1.0 m	92.257.1000.9	30	92.257.1003.9	30	92.257.1004.9	30	
			2.0 m	92.257.2000.9	20	92.257.2003.9	20	92.257.2004.9	20	
			3.0 m	92.257.3000.9	15	92.257.3003.9	15	92.257.3004.9	15	
			4.0 m	92.257.4000.9	10	92.257.4003.9	10	92.257.4004.9	10	
			5.0 m	92.257.5000.9	10	92.257.5003.9	10	92.257.5004.9	10	
			6.0 m	92.257.6000.9	8	92.257.6003.9	8	92.257.6004.9	8	
			7.0 m	92.257.7000.9	5	92.257.7003.9	5	92.257.7004.9	5	
			8.0 m	92.257.8000.9	5	92.257.8003.9	5	92.257.8004.9	5	
			Type	GST 18i5 K1BS 1,5		GST 18i5 K1B- 1,5		GST 18i5 K1-S 1,5		
			¹⁾ Other lengths available on request ²⁾ Modification of the sheath/insulation strip lengths available on request							



	Extender lead	Starter lead	Connection lead
	5 x 2.5 mm ² female – male	5 x 2.5 mm ² female – free end with ferrules ²⁾	5 x 2.5 mm ² male – free end with ferrules ²⁾

Standard PVC cable Type H05VV-F5G2.5



Length ¹⁾	Extender lead		Starter lead		Connection lead	
	Part No.	Box Qty	Part No.	Box Qty	Part No.	Box Qty
1.0 m	92.258.1000.1	30	92.258.1003.1	30	92.258.1004.1	30
2.0 m	92.258.2000.1	20	92.258.2003.1	20	92.258.2004.1	20
3.0 m	92.258.3000.1	15	92.258.3003.1	15	92.258.3004.1	15
4.0 m	92.258.4000.1	10	92.258.4003.1	10	92.258.4004.1	10
5.0 m	92.258.5000.1	8	92.258.5003.1	8	92.258.5004.1	8
6.0 m	92.258.6000.1	5	92.258.6003.1	5	92.258.6004.1	5
7.0 m	92.258.7000.1	5	92.258.7003.1	5	92.258.7004.1	5
8.0 m	92.258.8000.1	5	92.258.8003.1	5	92.258.8004.1	5

Type	GST 18i5 K1BS 2,5	GST 18i5 K1B- 2,5	GST 18i5 K1-S 2,5
------	-------------------	-------------------	-------------------



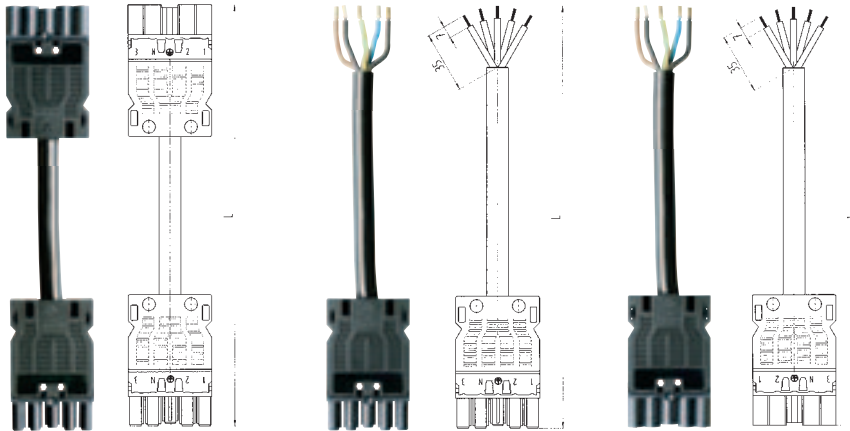
GST 18i 5 pole 250/400 V, 16 A

			Extender lead		Starter lead		Connection lead		
Cable: S05VV-F5G1.5/2.5 Insulation: halogen-free									
Cable assemblies									
Standard PVC cable Type S05VV-F5G1.5									
Application	Coding	Colour	Length ¹⁾	Part No.	Box Qty	Part No.	Box Qty	Part No.	Box Qty
Mains with earth	Cable 1 	black (white with final digit xx.xxx.xxxx.2) cable: black/white	1.0 m	92.257.1060.1	30	92.257.1063.1	30	92.257.1064.1	30
			2.0 m	92.257.2060.1	20	92.257.2063.1	20	92.257.2064.1	20
			3.0 m	92.257.3060.1	15	92.257.3063.1	15	92.257.3064.1	15
			4.0 m	92.257.4060.1	10	92.257.4063.1	10	92.257.4064.1	10
			5.0 m	92.257.5060.1	10	92.257.5063.1	10	92.257.5064.1	10
			6.0 m	92.257.6060.1	8	92.257.6063.1	8	92.257.6064.1	8
			7.0 m	92.257.7060.1	5	92.257.7063.1	5	92.257.7064.1	5
			8.0 m	92.257.8060.1	5	92.257.8063.1	5	92.257.8064.1	5
Dimming L, N, PE, +, -	Cable 2 	pastel blue cable: black	1.0 m	92.257.1060.9	30	92.257.1063.9	30	92.257.1064.9	30
			2.0 m	92.257.2060.9	20	92.257.2063.9	20	92.257.2064.9	20
			3.0 m	92.257.3060.9	15	92.257.3063.9	15	92.257.3064.9	15
			4.0 m	92.257.4060.9	10	92.257.4063.9	10	92.257.4064.9	10
			5.0 m	92.257.5060.9	10	92.257.5063.9	10	92.257.5064.9	10
			6.0 m	92.257.6060.9	8	92.257.6063.9	8	92.257.6064.9	8
			7.0 m	92.257.7060.9	5	92.257.7063.9	5	92.257.7064.9	5
			8.0 m	92.257.8060.9	5	92.257.8063.9	5	92.257.8064.9	5
			Type	GST 18i5 K1BS 1,5		GST 18i5 K1B- 1,5		GST 18i5 K1-S 1,5	
¹⁾ Other lengths available on request ²⁾ Modification of the sheath/insulation strip lengths available on request									



Extender lead	Starter lead	Connection lead
5 x 2.5 mm ² female – male	5 x 2.5 mm ² female – free end with ferrules ²⁾	5 x 2.5 mm ² male – free end with ferrules ²⁾

Standard PVC cable Type S05VV-F5GZ.5



Length ¹⁾	Extender lead		Starter lead		Connection lead	
	Part No.	Box Qty	Part No.	Box Qty	Part No.	Box Qty
1.0 m	92.258.1060.1	30	92.258.1063.1	30	92.258.1064.1	30
2.0 m	92.258.2060.1	20	92.258.2063.1	20	92.258.2064.1	20
3.0 m	92.258.3060.1	15	92.258.3063.1	15	92.258.3064.1	15
4.0 m	92.258.4060.1	10	92.258.4063.1	10	92.258.4064.1	10
5.0 m	92.258.5060.1	8	92.258.5063.1	8	92.258.5064.1	8
6.0 m	92.258.6060.1	5	92.258.6063.1	5	92.258.6064.1	5
7.0 m	92.258.7060.1	5	92.258.7063.1	5	92.258.7064.1	5
8.0 m	92.258.8060.1	5	92.258.8063.1	5	92.258.8064.1	5

Type	GST 18i5 K1BS 2,5	GST 18i5 K1B- 2,5	GST 18i5 K1-S 2,5
------	-------------------	-------------------	-------------------





			Distribution block		Distribution block		Mounting plate	
			5/3 pole with locking device. Through wiring for three-phase current; 5 pole male and female connectors; two outgoing single phase circuits for each phase. (see DIN VDE 0100 part 430 section 9.2 for protection of the neutral conductor – by making the load distribution as symmetrical as possible, excessive loading of the neutral conductor can be avoided).		5 pole with locking device 1 input, 5 pole male connector 3 outputs, 5 pole female connector		for Distribution block 5 pole; 5/3 pole for panel mounting (see "Accessories" for steel fixing plate)	
Application	Coding	Colour	Part No.	Box Qty	Part No.	Box Qty	Part No.	Box Qty
Distribution blocks								
Mains with earth	Code 1 	black (on request) white	92.050.0153.1	100	92.050.0353.1	60	07.413.5553.1	100
Dimming L, N, PE, +, -	Code 2 	pastel blue						
Type			GST 18i5V37A1		GST 18i5V3P1			

Note:
see "Accessories" for
steel fixing plate

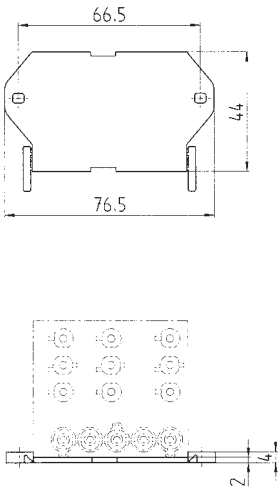


Mounting plate

for Distribution block 5 pole;
5/3 pole

for bolt on fixing

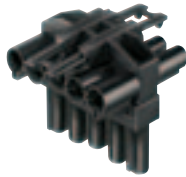
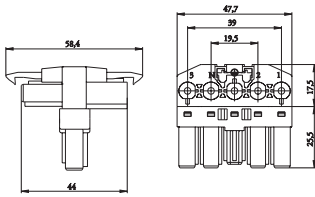
Part No. Box Qty



Distribution block T-connector

with locking device
1 input,
5 pole male connector
2 outputs,
5 pole female connector

Part No. Box Qty

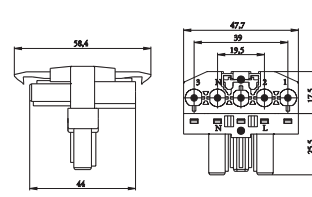


Distribution block T-connector

with locking device.
Through wiring for three-phase current,
5 pole male and female connectors
3 pole connector for single phase
current.

Select product for phase required

Part No. Box Qty



Select the phase conductor

07.413.5453.1 100

92.050.1053.1 100

L1: 92.050.4153.1
L2: 92.050.4253.1
L3: 92.050.4353.1

92.050.1453.0 100

GST 18i5 V2P1 T

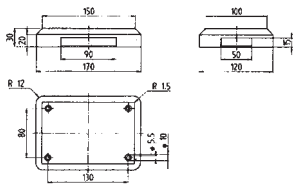
GST 18i5 V2A1 T



Distribution box

with locking device

Distribution box with 8 ports. Can be fitted as required with 3, 4 and 5 pole male and female connectors. Optional internal wiring depending on the application. See "Distribution units" for further information.



See "Distribution units" for further information



Sample sets

For GST 18i5

Part No.	Box Qty
----------	---------



Contents:

GST 18i5 Connection cable
5 x 2.5 mm², male-free end
92.258.XY04.1
Sample length

GST 18i5 screw connection, female connector
92.953.3053.1

GST 18i5 Snap in, spring-loaded connection, male connector
92.052.9658.1

GST 18i5 Distribution block 5/3
92.050.0153.1

Mounting plate for screw fixing
07.413.5432.1

GST locking device for free cable connection
05.587.3156.1

GST 18i3 Extension cable
3 x 1.5 mm²
92.232.0200.1

99.480.0000.0	1
---------------	---

GST 18i5

5 pole mains

